

Component Replacement - electrical -



Xperia™ Z3+
E6553

Xperia™ Z3+ Dual
E6533

CONTENTS

1	Replaceable Components	3
2	Component Placing.....	5
3	Additional Repair info	7
4	Revision History	11

For general information about electrical repair related issues, refer to 1220-1336: Generic Repair Manual - electrical

Baking prior to repair is required, if the board have been exposed to air more than 12 hours from PWB package opening. Too long exposure time increase the level of moisture in PWB and the PWB could delaminate during repair process and result in direct or latent failures and reduce reliability.

The boards shall be baked in 125°C ±5°C for 4 hours.

Test after electrical replacement: refer to 1273-1772 Mechanical Test Instruction

All Electrical components are RLC level B, Reversed Logistic Classification, See the Spare Part Handling chapter in Mechanical/Generic Repair Manual 1220-1333.

Do not remove shield can lids (Heat pasta are added and RF performance will be damaged)

1 Replaceable Components

EXPLANATION OF ABBREVIATIONS USED IN THE COLUMN 'COMMENTS' BELOW

COMPONENT LOCATION

P = Primary side

S = Secondary side

REPAIR METHOD

HA = Hot Air (removal & mounting)

ST = Soldering Tool (removal & mounting)

HA/ST = Hot Air for removal - Soldering Tool for mounting

BGA = BGA Station

BH = Bottom Heater

ADDITIONAL INFORMATION

⇒1 (2,3,4, etc.) = Proceed to 'Additional Repair Info' for further instructions in the indicated section(s).

Position	Component	Part no.	Comments
CN1300	Conn BtB Plug 4p HIROSE/BM22	1281-9973	S HA+BH ⇒1
CN2800	Conn Leaf Spring Plug 1p	1289-4034	S HA+BH ⇒2
CN2801	Conn Leaf Spring Plug 1p	1289-4034	S HA+BH ⇒2
CN2802	Conn Coax Receptacle 1p	1261-3585	S HA+BH ⇒3
CN2803	Conn Coax Receptacle 1p	1287-3442	S HA+BH ⇒4
CN2804	Conn Coax Receptacle 1p	1287-3442	S HA+BH ⇒5
CN4000	Card Conn Micro SD	1281-9124	P HA+BH or BGA ⇒6
CN4100	Card Conn SIM Dual Nano	1288-8200	P HA+BH or BGA ⇒7
CN8000	Conn Leaf Spring Plug 1p	1284-1671	P HA+BH ⇒8
CN8001	Conn Leaf Spring Plug 1p	1284-1671	P HA+BH ⇒8
CN8002	Conn Leaf Spring Plug 1p	1284-1671	P HA+BH ⇒8
CN8003	Conn Coax Receptacle 1p	1287-3442	S HA+BH ⇒9
CN8005	Conn Coax Receptacle 1p	1287-3442	S HA+BH ⇒10
CN8009	Conn Leaf Spring Plug 1p	1289-4034	P HA+BH ⇒11
CN8010	Conn Leaf Spring Plug 1p	1291-9973	P HA+BH ⇒11
CN8650	Conn Leaf Spring Plug 1p Antenna/Groundi	1238-5876	P HA+BH ⇒12
CN8651	Conn Leaf Spring Plug 1p Antenna/Groundi	1238-5876	P HA+BH ⇒12
D7800	LED White 1.63mm x 2.03mm	1278-5197	S HA+BH ⇒13
FL2202	Filter Ceramic Lo-pass 50.0 MHz 1608	1269-0526	S HA+BH ⇒14
UC7602	Fuse 0.25A 1.0x0.5mm	1265-7224	S HA+BH ⇒15

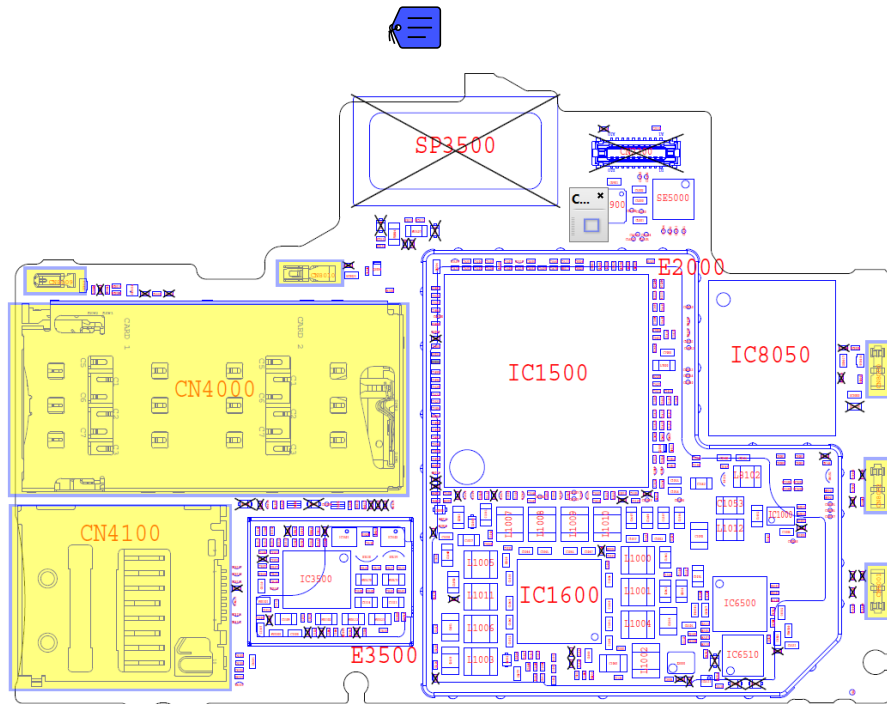
Note: Valid for E6533.

Position	Component	Part no.	Comments
CN1300	Conn BtB Plug 4p HIROSE/BM22	1281-9973	S HA+BH ⇒1
CN2800	Conn Leaf Spring Plug 1p	1289-4034	S HA+BH ⇒2
CN2801	Conn Leaf Spring Plug 1p	1289-4034	S HA+BH ⇒2
CN2802	Conn Coax Receptacle 1p	1261-3585	S HA+BH ⇒3
CN2803	Conn Coax Receptacle 1p	1287-3442	S HA+BH ⇒4
CN2804	Conn Coax Receptacle 1p	1287-3442	S HA+BH ⇒5
CN8000	Conn Leaf Spring Plug 1p	1284-1671	P HA+BH ⇒8
CN8001	Conn Leaf Spring Plug 1p	1284-1671	P HA+BH ⇒8
CN8002	Conn Leaf Spring Plug 1p	1284-1671	P HA+BH ⇒8
CN8003	Conn Coax Receptacle 1p	1287-3442	S HA+BH ⇒9
CN8005	Conn Coax Receptacle 1p	1287-3442	S HA+BH ⇒10
CN8009	Conn Leaf Spring Plug 1p	1289-4034	P HA+BH ⇒11
CN8010	Conn Leaf Spring Plug 1p	1291-9973	P HA+BH ⇒11
CN8650	Conn Leaf Spring Plug 1p Antenna/Groundi	1238-5876	P HA+BH ⇒12
CN8651	Conn Leaf Spring Plug 1p Antenna/Groundi	1238-5876	P HA+BH ⇒12
D7800	LED White 1.63mm x 2.03mm	1278-5197	S HA+BH ⇒13
FL2202	Filter Ceramic Lo-pass 50.0 MHz 1608	1269-0526	S HA+BH ⇒14
UC7602	Fuse 0.25A 1.0x0.5mm	1265-7224	S HA+BH ⇒15

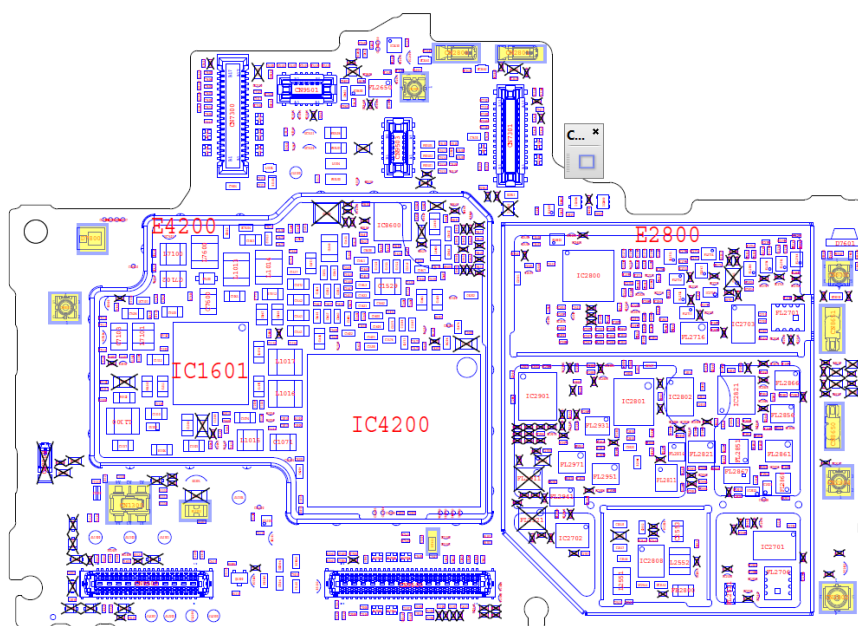
Note: Valid for E6553

2 Component Placing

To access the Component Placing document, double-click the icon below.
Applicable for on-screen viewing only – icon not shown on hard-copies.



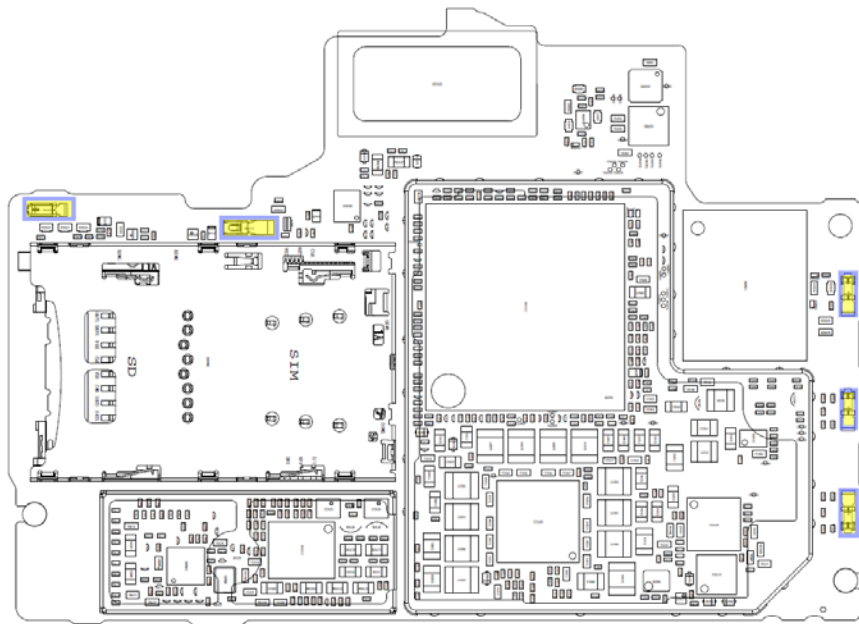
E6533 Primary side



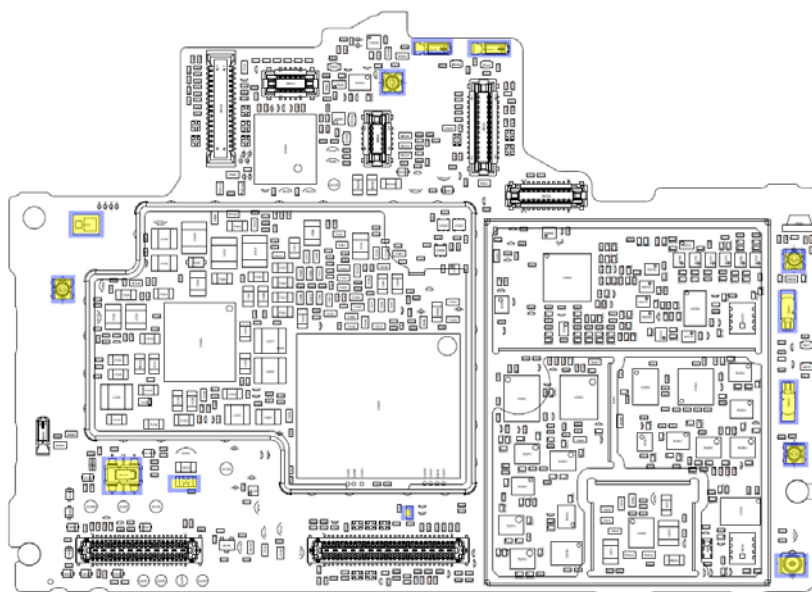
E6533 Secondary side



To access the Component Placing document, double-click the icon below.
Applicable for on-screen viewing only – icon not shown on hard-copies.



E6553 Primary side



E6553 Secondary side

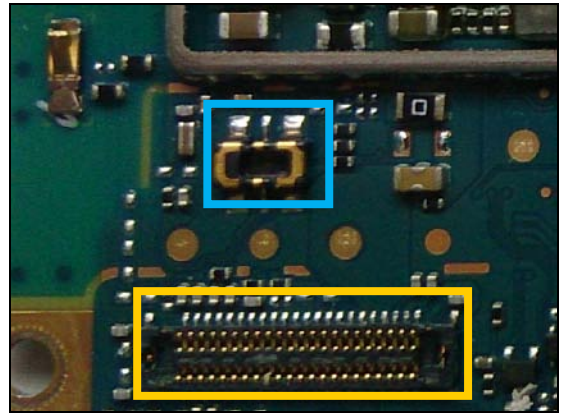
3 Additional Repair info

1

CN1300

Replace if mechanical damaged. (Phone dead or power off)

Protect the BtB connector with capton tape!

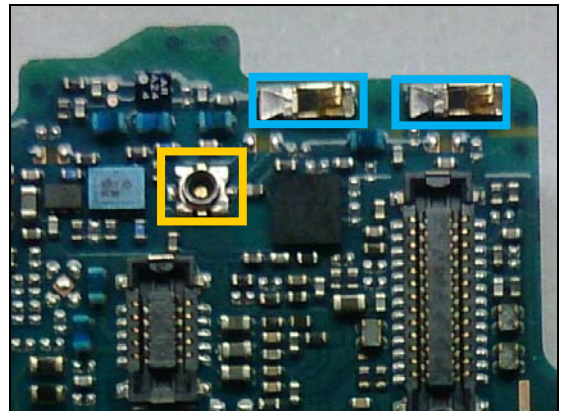


2

CN2800, CN2801

Replace if mechanical damaged (No or bad network, diversity antenna)

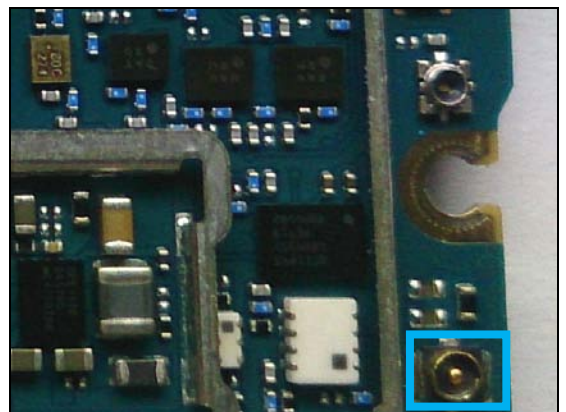
Protect the RF connector with capton tape!



3

CN2802

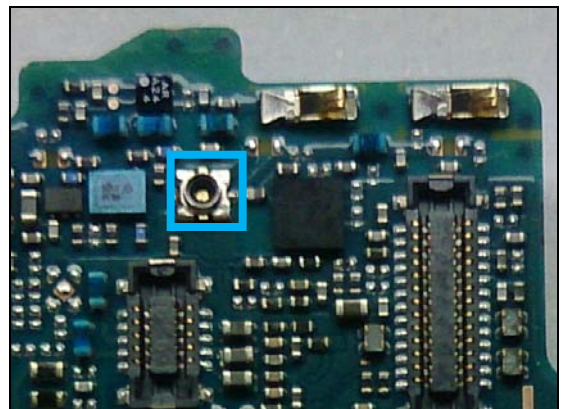
Replace if mechanical damaged (No or bad network, main antenna)



4

CN2803

Replace if open circuit 1-4 (No or bad network, diversity antenna)

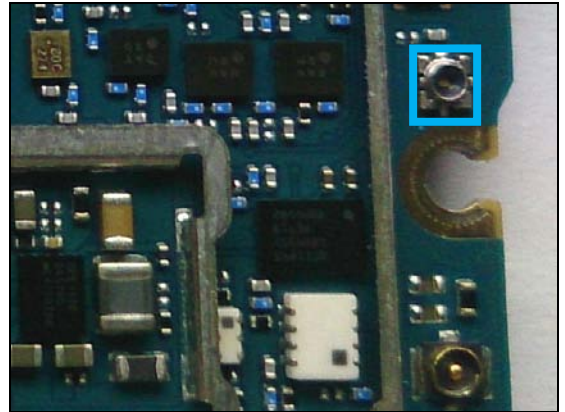


Repair Actions: Additional Repair Info

5

CN2804

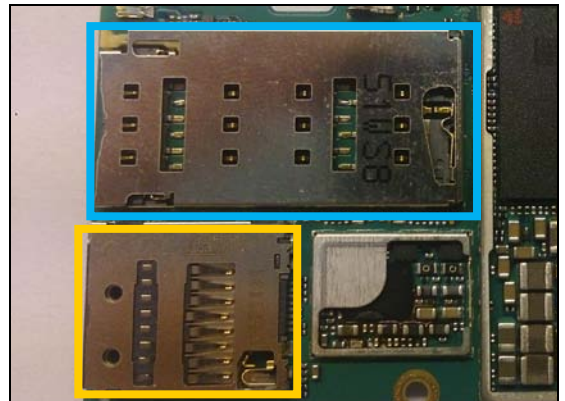
Replace if open circuit 1-4 (No or bad network, main antenna)



6

CN4000

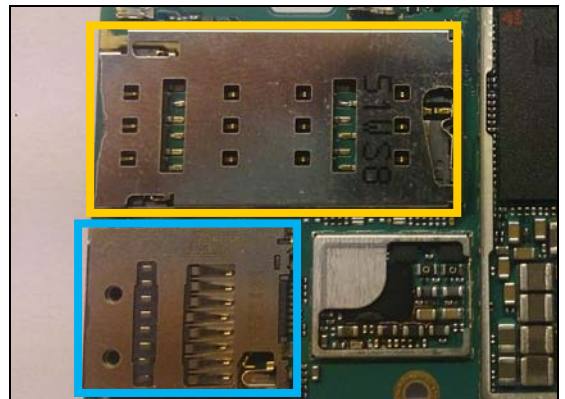
Replace if mechanical damaged (No network, restart, No SIM card inserted, NFC SIM problem, reset problem)
Protect the SD connector with capton tape!



7

CN4001

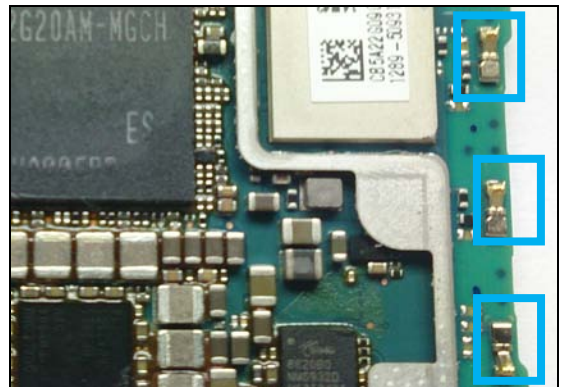
Replace if mechanical damaged (No SD card)
Protect the SIM connector with capton tape!



8

CN8000, CN8001, CN8002

Replace if mechanical damaged (No or bad WLAN / BT, main antenna)

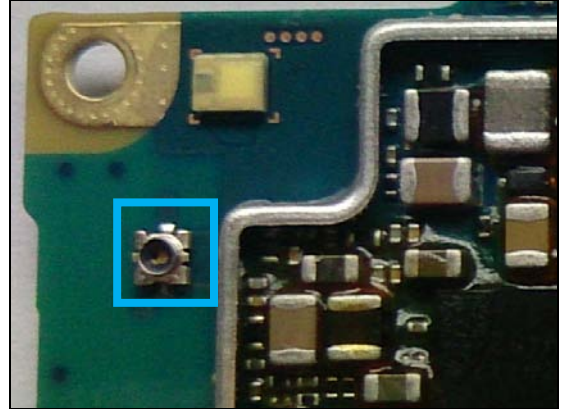


Repair Actions: Additional Repair Info

9

CN8003

Replace if open circuit 1-4 (No or bad WLAN / BT, main antenna)

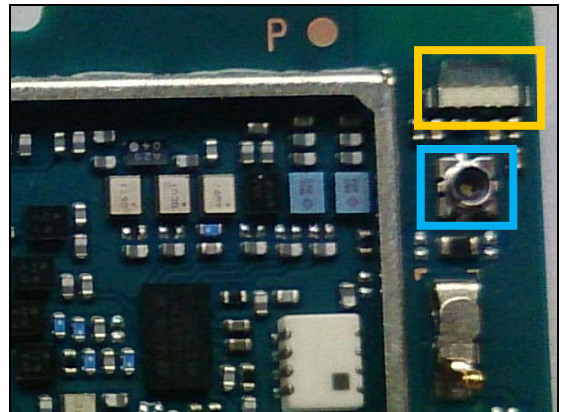


10

CN8005

Replace if open circuit 1-4 (No or bad WLAN / BT, Sub antenna)

Protect the LED with capton tape!

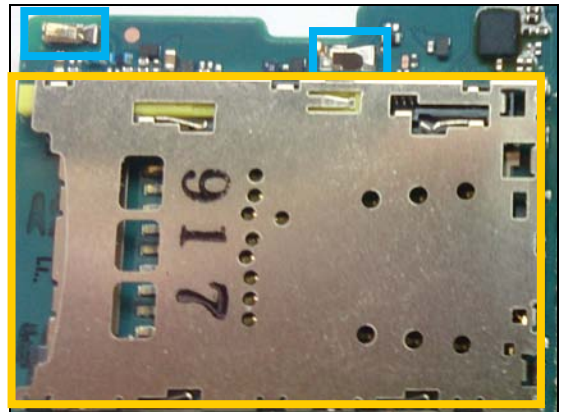


11

CN8009, CN8010

Replace if mechanical damaged (No or bad WLAN / BT, Sub antenna)

Protect the SD/SIM connector with capton tape!

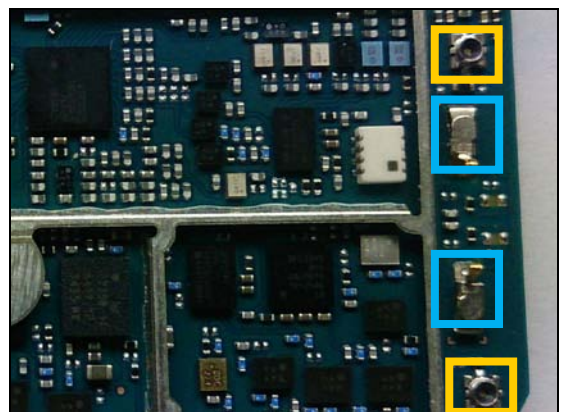


12

CN8650, CN8651

Replace if mechanical damaged (No or bad NFC)

Protect the RF connectors with capton tape!

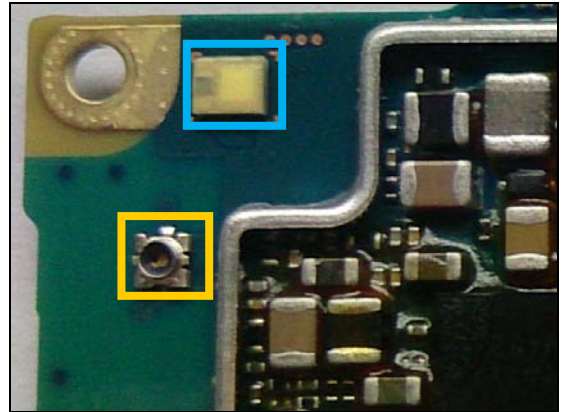


Repair Actions: Additional Repair Info

13

D7800

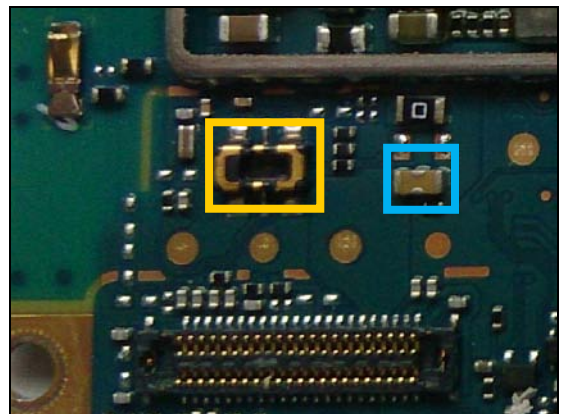
*Replace if Flash LED not working.
Protect the RF connector with capton tape!*



14

FL2202

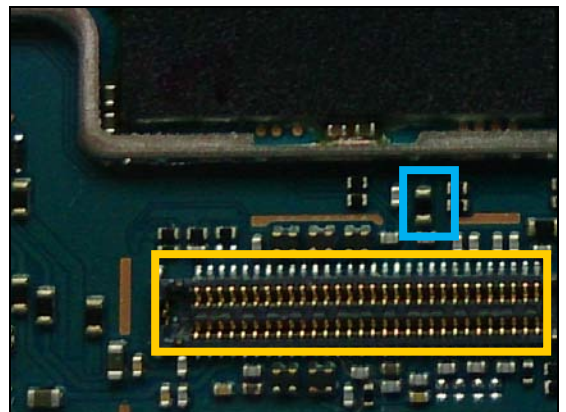
*Replace if open circuit (Not charging from USB
connector)
Protect the BtB connector with capton tape!*



15

UC7602

*Replace if open circuit (LCD not working
Protect the BtB connector with capton tape!*



4 Revision History

Rev.	Date	Changes / Comments
1	2015-05-27	Initial release